

June 1, 2010

Re: Construction Update – Neighbor Q+A South Wall

Dear Neighbor:

We have received several questions recently about the work at 150 W 83rd St. Please see responses to these inquiries, below:

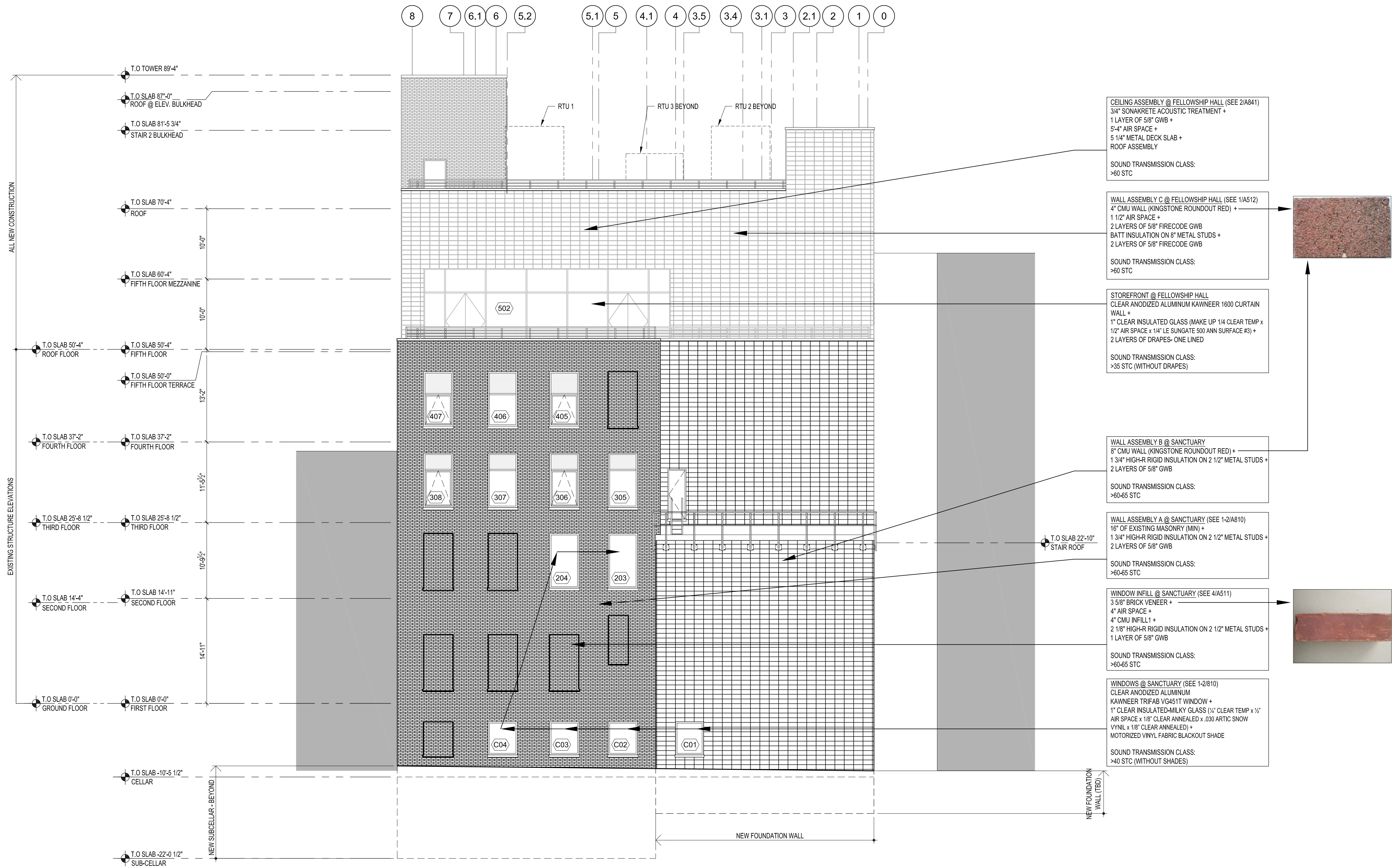
- Q1) Presence of lead or asbestos in the south wall: Environmental testing on the south wall came back negative for lead and asbestos. Although not required, additional safety measures were taken in engaging an air monitoring consultant during demolition. The results again came back negative for presence of lead or asbestos.
- Q2) New south wall materials and wall construction: A full elevation of what the reconstructed south wall will look like, including material descriptions and technical wall assembly descriptions with acoustical performance ratings follows this letter.
- Q3) Acoustics of Fellowship Hall and terrace: We have engaged an acoustical consultant to provide advice on insulation and noise properties of the walls, etc. The drawing that follows this letter provides a description of acoustical materials and sound transmission ratings for the interior of the fellowship hall. When asked about the outside space, the acoustical consultant indicated that he needs to work in the actual environment, upon building completion, to be sure that a study of outside noise is accurate -- based on the current conditions in the building, pre-existing neighborhood ambient noise levels, etc.
- Q4) Operating Hours: There is a search process underway to hire a new Lead Pastor at Redeemer who will be the executive responsible for the West Side congregation. We are looking at both internal and external candidates and in the final stages of our search and have identified 5 potential candidates. This person should be hired from the list of 5 potential candidates by the end of the summer, and will have significant input into the hours and programming of new building, and whether we might plan to rent to outside groups. Our current date for completion of the project and building opening is 12/31/2011.
- Q5) Details of the HVAC equipment on the roof: Please refer to the roof plan and building section found at: http://www.150w83.com/82st_Nov2008.pdf

In addition, a one week look ahead schedule for expected construction activity during the next week is available upon request to Penny Ryan at CB7.

You can find out more about Redeemer Presbyterian Church at our website, www.redeemer.com. Please continue to visit the project website www.150w83.com where we will post updates of building activity periodically in order to keep you informed.

Sincerely,

Susan Lee, Project Manager



CEILING ASSEMBLY @ FELLOWSHIP HALL (SEE 2/A841)
 3/4" SONAKRETE ACOUSTIC TREATMENT +
 1 LAYER OF 5/8" GWB +
 5/4" AIR SPACE +
 5 1/4" METAL DECK SLAB +
 ROOF ASSEMBLY
 SOUND TRANSMISSION CLASS:
 >60 STC

WALL ASSEMBLY C @ FELLOWSHIP HALL (SEE 1/A512)
 4" CMU WALL (KINGSTONE ROUNDOUT RED) +
 1 1/2" AIR SPACE +
 2 LAYERS OF 5/8" FIRECODE GWB
 BATT INSULATION ON 8" METAL STUDS +
 2 LAYERS OF 5/8" FIRECODE GWB
 SOUND TRANSMISSION CLASS:
 >60 STC

STOREFRONT @ FELLOWSHIP HALL
 CLEAR ANODIZED ALUMINUM KAWNEER 1600 CURTAIN
 WALL +
 1" CLEAR INSULATED GLASS (MAKE UP 1/4 CLEAR TEMP x
 1/2" AIR SPACE x 1/4" LE SUNGATE 300 ANN SURFACE #3) +
 2 LAYERS OF DRAPES- ONE LINED
 SOUND TRANSMISSION CLASS:
 >35 STC (WITHOUT DRAPES)

WALL ASSEMBLY B @ SANCTUARY
 8" CMU WALL (KINGSTONE ROUNDOUT RED) +
 1 3/4" HIGH-R RIGID INSULATION ON 2 1/2" METAL STUDS +
 2 LAYERS OF 5/8" GWB
 SOUND TRANSMISSION CLASS:
 >60-65 STC

WALL ASSEMBLY A @ SANCTUARY (SEE 1-2/A810)
 16" OF EXISTING MASONRY (MIN) +
 1 3/4" HIGH-R RIGID INSULATION ON 2 1/2" METAL STUDS +
 2 LAYERS OF 5/8" GWB
 SOUND TRANSMISSION CLASS:
 >60-65 STC

WINDOW INFILL @ SANCTUARY (SEE 4/A511)
 3 5/8" BRICK VENEER +
 4" AIR SPACE +
 4" CMU INFILL +
 2 1/8" HIGH-R RIGID INSULATION ON 2 1/2" METAL STUDS +
 1 LAYER OF 5/8" GWB
 SOUND TRANSMISSION CLASS:
 >60-65 STC

WINDOWS @ SANCTUARY (SEE 1-2/B10)
 CLEAR ANODIZED ALUMINUM
 KAWNEER TRIFAB 1/4" GLASS +
 1" CLEAR INSULATED-MILKY GLASS (1/2" CLEAR TEMP x 1/2"
 AIR SPACE x 1/8" CLEAR ANNEALED x .030 ARTIC SNOW
 VINYL x 1/8" CLEAR ANNEALED) +
 MOTORIZED VINYL FABRIC BLACKOUT SHADE
 SOUND TRANSMISSION CLASS:
 >40 STC (WITHOUT SHADES)

ISSUED FOR CONSTRUCTION	22.07.09
ISSUED FOR BID	22.04.09
PROGRESS SET	14.11.08
ISSUED FOR BID	13.06.08
80% CD PROGRESS SET	14.05.08
ISSUED FOR PRICING	21.12.07
REVISION/DATE OF ISSUE	

GW
 Gertler & Wente ARCHITECTS LLP

145 West 30th Street
 New York, NY 10001
 T 212.273.9888
 F 212.273.9889
 gwarch.com

ARCHITECT

CONSULTANTS	
GEOTECHNICAL	
Richard Kessler, P.E.	T 973 890 1039
59 Jacobus Avenue	F 973 812 0789
Little Falls, NJ 07424	
STRUCTURAL	
Weidinger Associates Inc.	T 212 367 3000
375 Hudson Street	F 212 367 3030
New York, NY 10014	
MECHANICAL/ELECTRICAL/PLUMBING	
ICOR Associates, LLC	T 908 272 3300
485E Rte 1 South, Suite 320A	F 908 272 4440
Iselin, NJ 08830	
LIGHTING	
Filament 33, Inc.	T 646 674 0133
96 Schermerhorn Street	F 646 619 4496
Brooklyn, NY 11201	
THEATER & A/V	
Harvey Marshall Berling Associates	T 212 874 0214
173 West 81st Street	F 212 874 1482
New York, NY 10024	
SPECIFICATIONS	
Construction Specifications, Inc.	T 732 970 0700
22 Tennent Road	F 732 970 0790
Morganville, NJ 07751	
ELEVATOR	
IROS Elevator, Inc.	T 973 773 4404
864 Paterson Avenue	F 973 773 4711
East Rutherford, NJ 07073	

PROJECT
REDEEMER PRESBYTERIAN CHURCH
 150 WEST 83RD STREET
 NEW YORK, NY 10025

DRAWING
REAR ELEVATION

DATE	14 MAY 2008
SCALE	AS NOTED
JOB NUMBER	07020
DRAWN BY	GW

A402